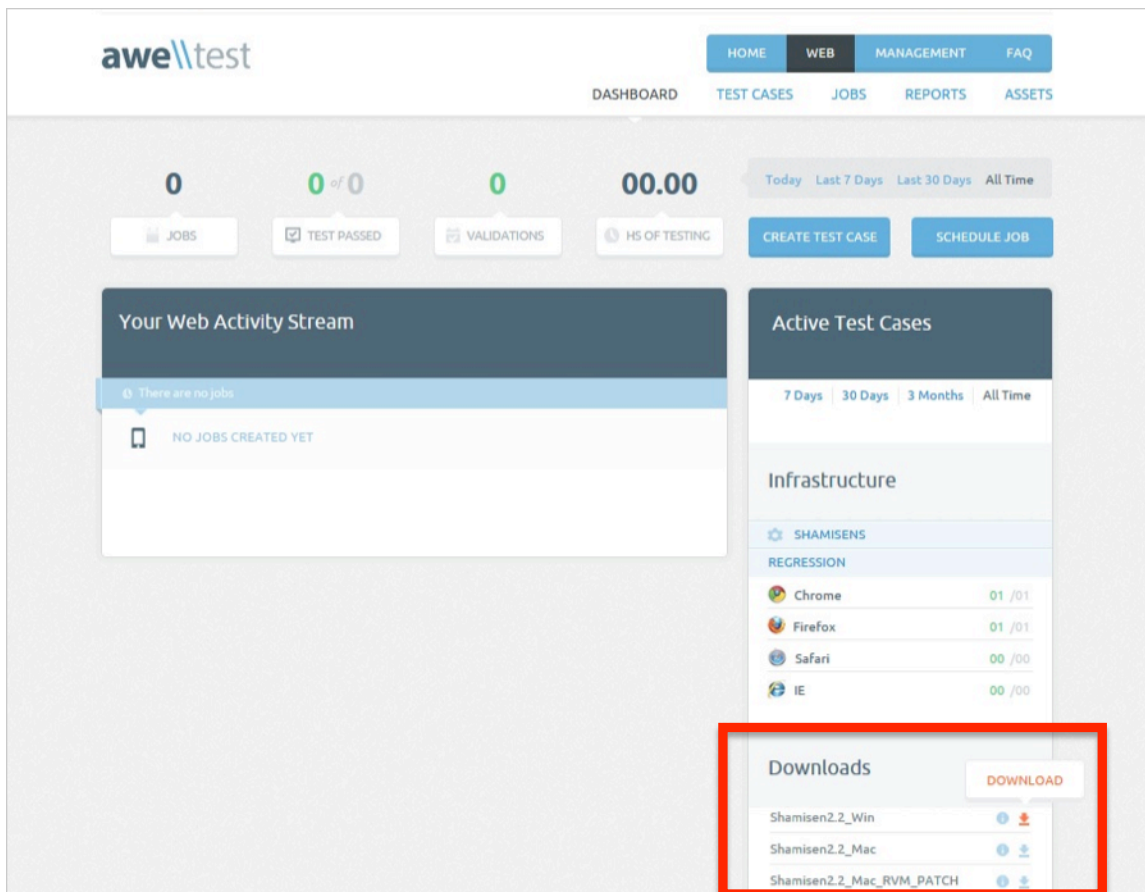


## Step 1: Download Shamisen

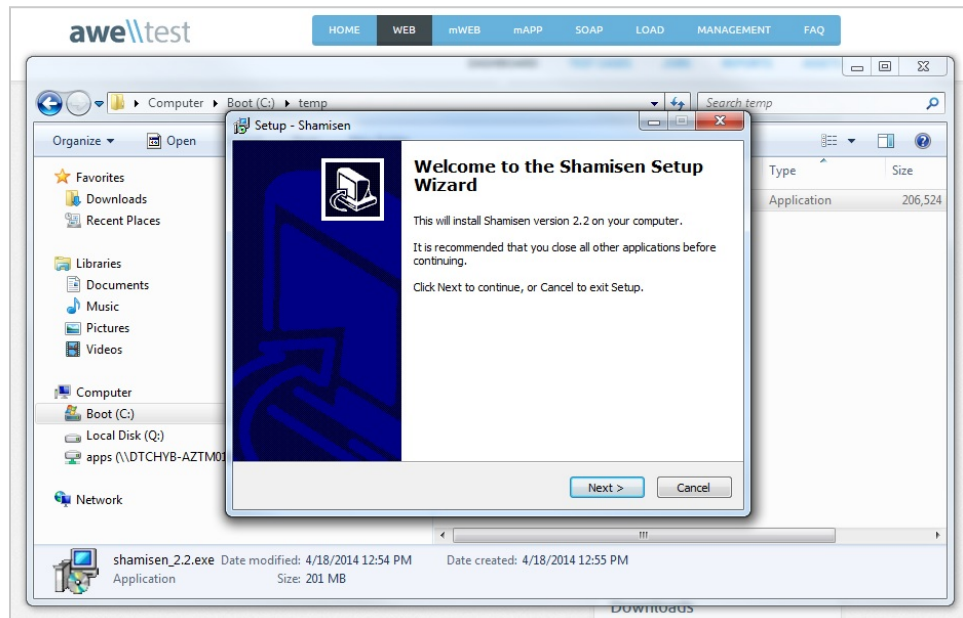
- Log on to <http://Awetest.com> (You must have an Awetest.com or an enterprise Awetest account in order to download Shamisen)
- On the “Downloads” section on the Dashboard, download the Shamisen for the specific OS (Windows or OS X) you are running.
  - This will download an executable (shamisen\_x.y.exe) on Windows
  - A zip file (shamisen\_x.y.zip) on Mac
- Save the files on your Hard Drive

## Step 2: Installing Shamisen (Windows)

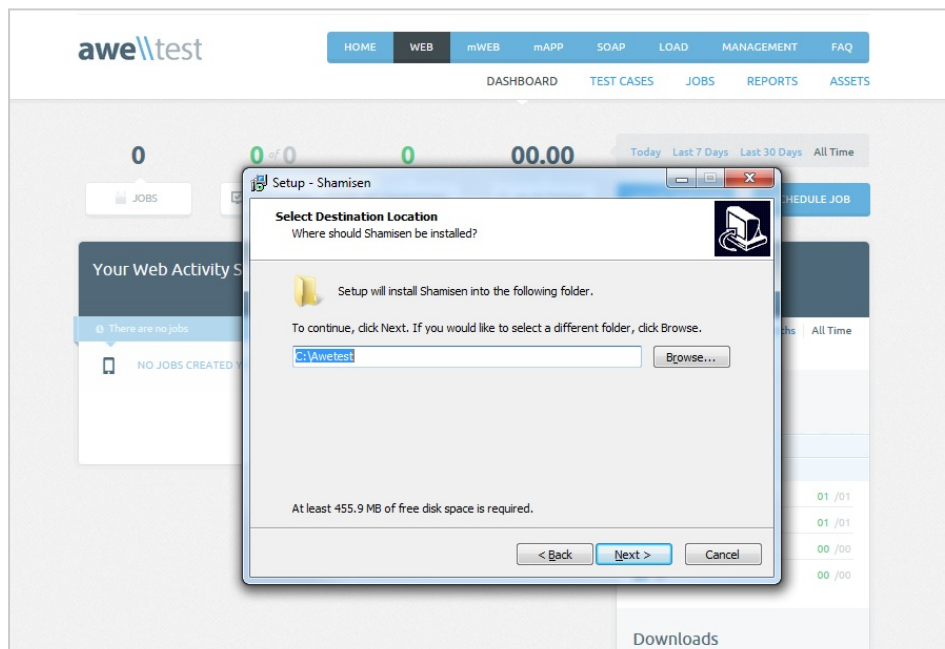
- Double Click the .exe file that you downloaded in Step 1.
- Click through the default options



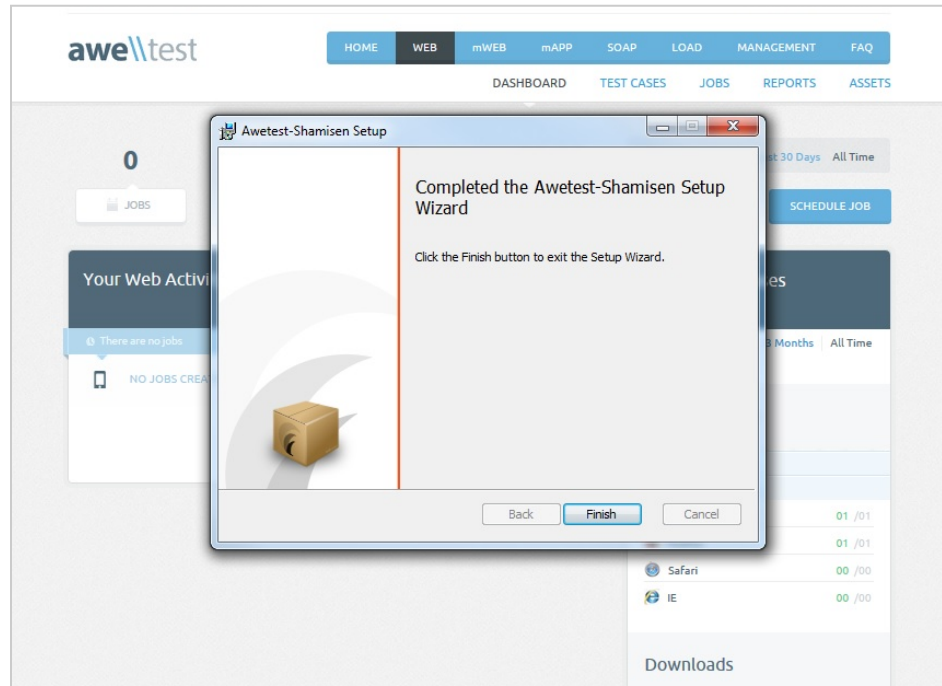
The screenshot displays the Awetest dashboard interface. At the top, there is a navigation bar with the Awetest logo and menu items: HOME, WEB, MANAGEMENT, and FAQ. Below this is a secondary navigation bar with DASHBOARD, TEST CASES, JOBS, REPORTS, and ASSETS. The main dashboard area features several widgets: a summary section with metrics for JOBS (0), TEST PASSED (0 of 0), VALIDATIONS (0), and HS OF TESTING (00.00); a 'Your Web Activity Stream' section showing 'NO JOBS CREATED YET'; an 'Active Test Cases' section with a filter for '7 Days'; an 'Infrastructure' section listing 'SHAMISENS' and 'REGRESSION' tests for Chrome, Firefox, Safari, and IE; and a 'Downloads' section at the bottom right, which is highlighted with a red box. The 'Downloads' section contains a 'DOWNLOAD' button and a list of files: Shamisen2.2\_Win, Shamisen2.2\_Mac, and Shamisen2.2\_Mac\_RVM\_PATCH.

**NOTE:**

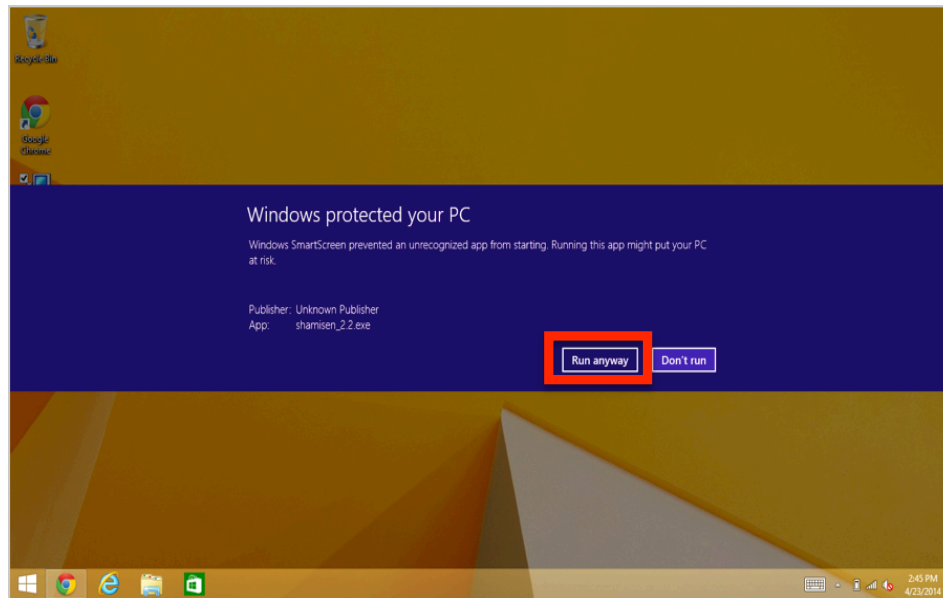
- **You MUST have Admin Rights on your Machine in order to install & run Shamisen**
- **The Shamisen folder must be installed in c:\Awetest folder (the Default setting in the installer)**



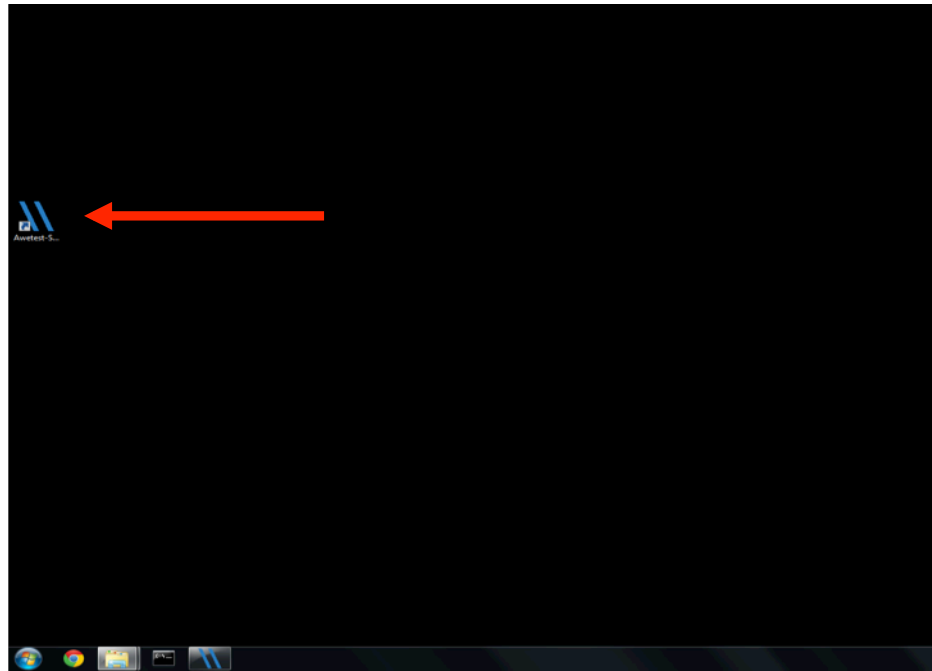
- The installer will guide you through the standard Awetest-Shamisen installation



**Note for Windows 8 users:**



- After downloading Shamisen2.2\_Win you may be prompted with this message, you must click “Run Anyway” to complete installing the application



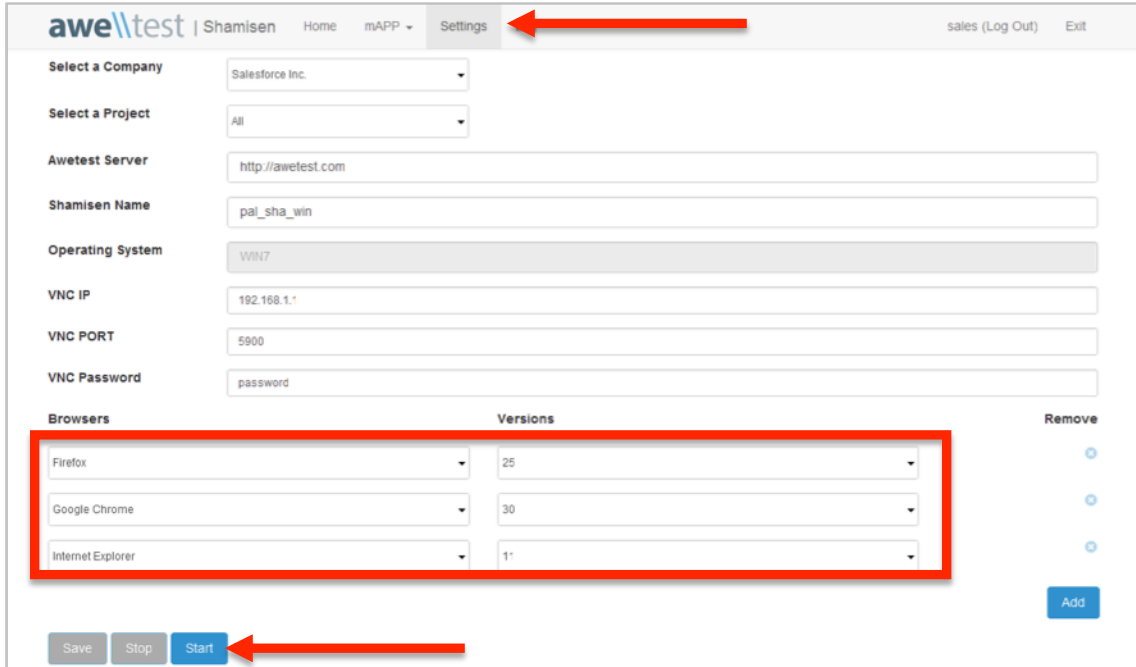
- Once Shamisen is done installing the icon will appear, click icon to launch Shamisen

### Step 3: Configuring Shamisen

- Once you launch Shamisen you will see the “Home” screen
- Input your Awetest login credentials and click Login

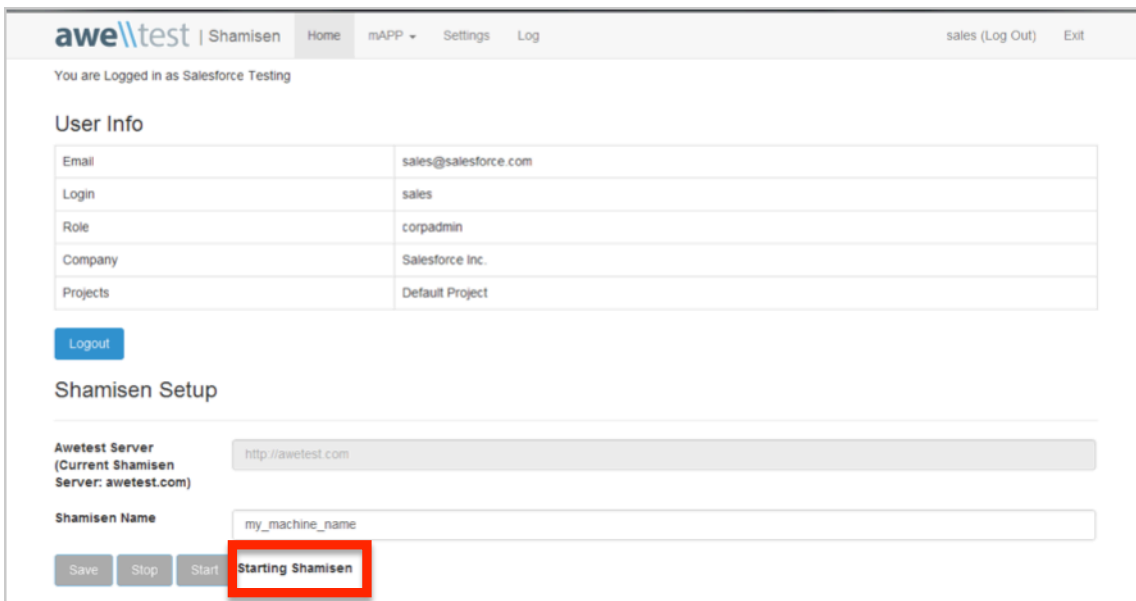
A screenshot of the Awetest Shamisen web application interface. The page has a header with the 'awe\\test' logo and navigation links: 'Shamisen', 'Home', 'mAPP', 'Settings', and 'Log'. There are also links for 'Login Below' and 'Exit'. The main content area is divided into two sections. The first section is 'Login to Awetest', which contains two input fields: 'Username' (with placeholder text 'Enter your username') and 'Password'. A red box highlights both input fields. Below these fields is a blue 'Log In' button, also highlighted with a red box. The second section is 'Shamisen Setup', which contains two input fields: 'Awetest Server (Current Shamisen Server: awetest.com)' with the value 'http://awetest.com' and 'Shamisen Name' with the value 'my\_machine\_name'. Below these fields are three buttons: 'Save', 'Stop', and 'Start'.

- Under the “Shamisen Setup” section, set your Awetest Server and Shamisen Name



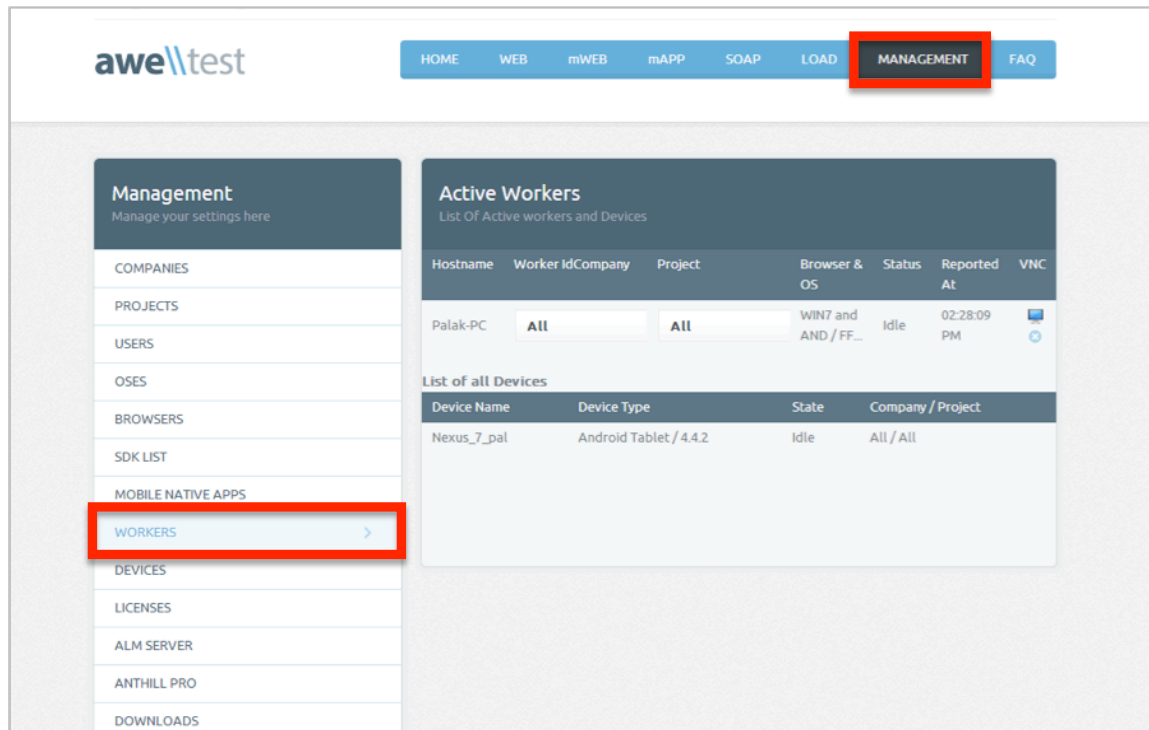
- Go to Settings, and here you can add/modify the specific attributes for this Shamisen worker
  - Select the Company-Project Combination for which this Shamisen can be used
  - Specify the Awetest Server to which you're connecting (this can be done on the home page as well)
  - Add specific browser types and versions you have on that Machine.
- Once you've finalized your settings, go ahead and Click start

**PLEASE NOTE: You can modify the settings while the Shamisen is running BUT they wont take effect until you restart the Shamisen**



- You will know Shamisen is running by seeing “Starting Shamisen” next to the start button on the Home screen
- Once the Shamisen is up & running, the “Stop” button will be activated.

#### Step 4: Viewing Workers/Shamisen in Awetest



The screenshot displays the Awetest Management interface. The top navigation bar includes links for HOME, WEB, mWEB, mAPP, SOAP, LOAD, MANAGEMENT (highlighted with a red box), and FAQ. The left sidebar lists various management options, with WORKERS (highlighted with a red box) selected. The main content area shows the 'Active Workers' section, which includes a table of active workers and a section for 'List of all Devices'.

| Hostname | Worker Id | Company | Project | Browser & OS         | Status | Reported At | VNC |
|----------|-----------|---------|---------|----------------------|--------|-------------|-----|
| Palak-PC | All       | All     | All     | WIN7 and AND / FF... | Idle   | 02:28:09 PM |     |

| Device Name | Device Type            | State | Company / Project |
|-------------|------------------------|-------|-------------------|
| Nexus_7_pal | Android Tablet / 4.4.2 | Idle  | All / All         |

- The Shamisen/Worker registers itself on the Awetest server once it is started.
- You can go back to Awetest on your browser and under Management > Workers section, you can see all the connected workers and devices.